

iKWL Quick Start Guide

Version 1.5

Table of Contents

What is iKWL?	1
System Requirements	1
Step-by-Step Instructions	1-8
• Creating a New iKWL Project	1
• Creating a Word List	3
• iKnow	4
• iWonder	6
• iLearned	7
• Almost Finished: Checking over your Work	8
• Beaming an iKWL Project	8
Additional Support	9

What is iKWL?

iKWL stands for: What I **K**now...
 What I **W**onder...
 and What I **L**earned!

iKWL is an exercise that guides students through new material. First, students brainstorm a list of words about their subject; they then use these words to construct a list of what they know. Next, they ask and document questions they would like to find out about their subject. After reading and researching their subject to answer these questions, they record the answers into iKnow portion of their project. Work is automatically saved, and can be a very helpful resource for quizzes or tests.

System Requirements

- Palm OS 3.5 or higher
- Windows 98 or higher, running Palm Desktop 4.0.1 or higher. (Palm Desktop 4.1 recommended)
- Macintosh OS 9.x or OSX, running Palm Desktop 4.1.
- 60 KB memory on handheld.

Creating a New iKWL Project

1. Tap the **iKWL** icon to open iKWL.
2. You arrive the Main screen. (Figure 1)



Figure 1

3. Tap **New**.
4. Enter your project name and your name on the lines provided (Figure 2), then tap **OK**.



Figure 2

5. You arrive at the iKWL screen. (Figure 3)

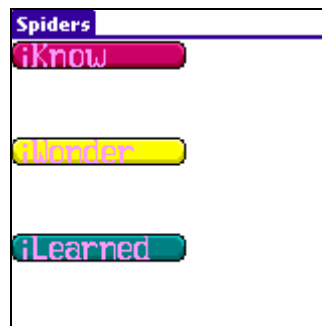


Figure 3

Creating a Word List

A Word List will help you generate better questions and ideas.

1. From the iKWL screen, tap the blue tab (with your project title on it) to access the Menu bar. (Figure 4)



Figure 4

2. Select **Word List** from the **Options** menu.
3. You arrive at the Word List screen. (Figure 5)



Figure 5

4. Brainstorm some words that have to do with your subject.
5. Tap **New** (or the orange 'Word List' bar) to add a word to your list.
6. Enter a word (Figure 6), then tap **OK**.

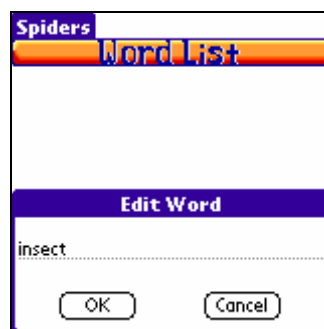


Figure 6

7. Repeat this same process for more words. (Figure 7)



Figure 7

8. When you are finished with your word list, tap **Back** to return to the iKWL screen. It's time to start with what you know.

iKnow

1. At the iKWL screen (Figure 3), tap **iKnow**.
2. You arrive at the iKnow screen. (Figure 8)

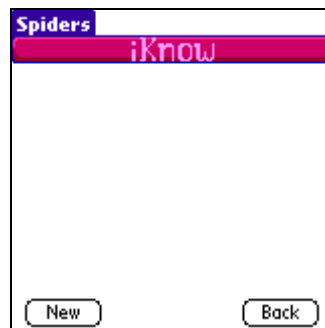


Figure 8

3. Tap **New** (or the pink 'iKnow' bar) to enter a new iKnow statement.
4. Your words from the word list are above the edit field (Figure 9), here to help you write. Tap them and they appear in your iKnow statements.
5. Enter something you know (Figure 9) and tap **OK**.

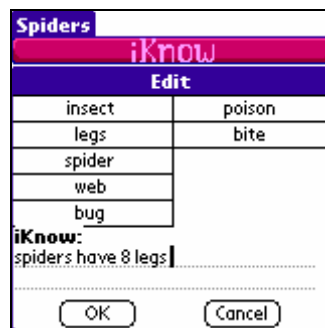


Figure 9

- Repeat this same process for more iKnow statements. (Figure 10)

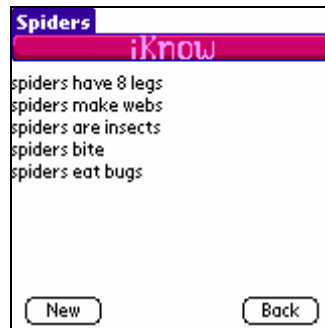


Figure 10

- To edit an existing iKnow statement, simply tap it.
- When you are finished with the iKnow section, tap **Back** to return to the iKWL screen. Your iKnow statements are now listed under the pink iKnow bar. (Figure 11) It's time to start with what you wonder.

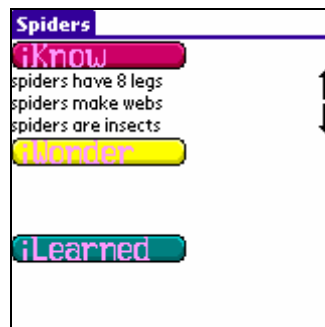


Figure 11

iWonder

- At the iKWL screen, tap **iWonder**.
- You arrive at the iWonder screen. (Figure 12)

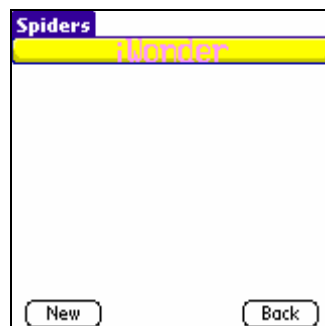


Figure 12

3. Tap **New** (or the yellow 'iWonder' bar) to enter a new iWonder question.
4. Your words from the word list, as well as some often-used question words, are above the edit field (Figure 13), here to help you write. Tap them and they appear in your iWonder questions.
5. Enter something you wonder (Figure 13) and tap **OK**.

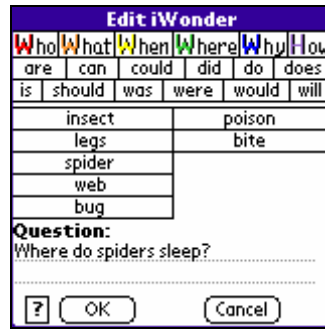


Figure 13

6. Repeat this same process for more iWonder questions. (Figure 14)

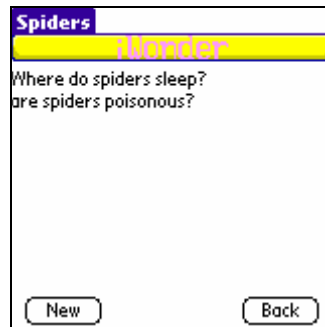


Figure 14

7. To edit an existing iWonder question, simply tap it.
8. When you are finished with the iWonder section, tap **Back** to return to the iKWL screen. Your iWonder questions are now listed under the yellow iWonder bar. (Figure 15) It's time to research your subject, and finish out with what you learned.

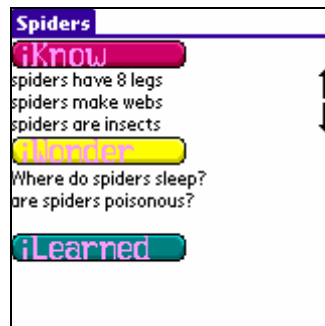


Figure 15

iLearned

Once you have researched your subject, it's time to fill in what you learned.

1. At the iKWL screen, tap **iLearned**.
2. You arrive at the iLearned screen. (Figure 16)

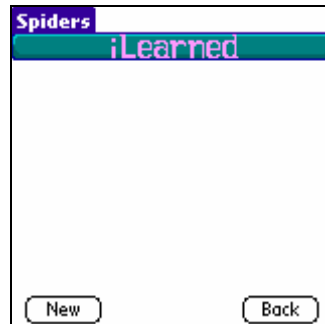


Figure 16

3. Tap **New** (or the blue-green 'iLearned' bar) to enter a new iLearned fact.
4. Your words from the word list are above the edit field, (Figure 17) here to help you write. Tap them and they appear in your iLearned facts.
5. Enter something you learned (Figure 17) and tap **OK**.

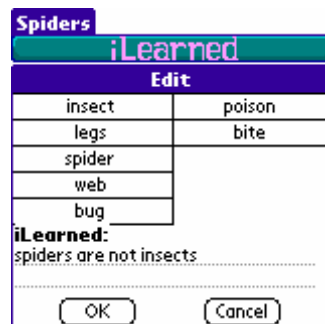


Figure 17

6. Repeat this same process for more iLearned facts. (Figure 18)



Figure 18

7. To edit an existing iLearned fact, simply tap it.
8. When you are finished with the iLearned section, tap **Back** to return to the iKWL screen. Your iLearned facts are now listed under the blue-green iLearned bar. (Figure 19)

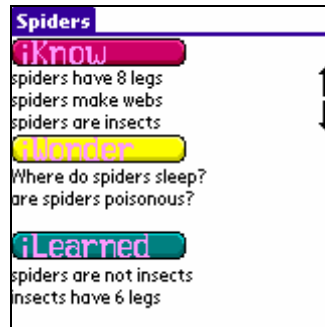


Figure 19

Almost Finished: Checking over your Work

Checking over your work is important.

1. Some of the things you first thought you knew might have turned out to be wrong. In this example, one of the iKnow statements is wrong. Spiders are NOT insects, so “spiders are insects” needs to be edited or deleted.
2. Also, go back and read your iWonder questions again. Are all your questions answered? If not, do some further research and see if you can figure out the answers.
3. Now that you’re finished with your iKWL project, use it to study for quizzes or just to look over all the new things you’ve been learning.

Beaming an iKWL Project

Sharing documents is a great way to facilitate learning.

1. To beam an iKWL Project, open the iKWL you wish to beam, align your IR port with a friend’s IR port, then tap **Beam Project** from the **Options** menu.
2. Your IR port will search for their IR port.
3. If you receive an error message detailing your handheld’s inability to find another handheld, try again. Make sure to keep both handhelds still during the beam. Laying them flat on a table or desk can help.
4. You will know your beam is successful when your iKWL opens on your friend’s handheld.

Additional Support

Additional support and user information can be found at <http://www.goknow.com/Support/>.

If you have any questions or concerns, please contact: support@goknow.com.